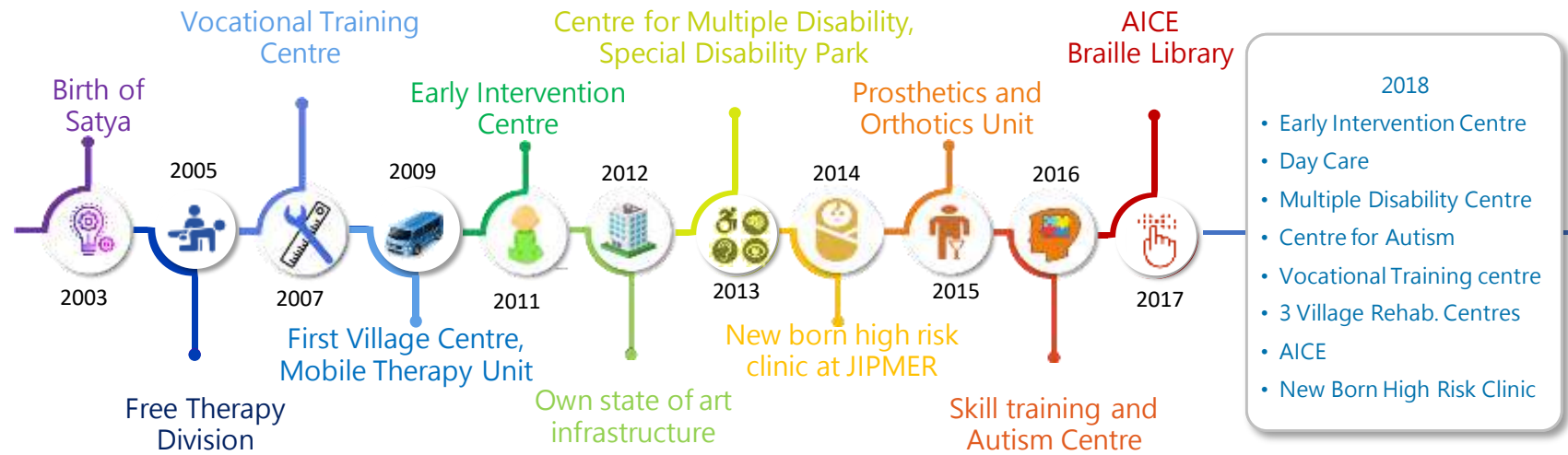


Satya – Special school was founded in 2003 with the aim to change the fragmented rehabilitation system into a more integrated and wholistic one. From humble beginnings of our work towards making social inclusion a reality in one room to 10 units including a special disability park and a geographic coverage of 150 km radius, the Satya journey has been improving the lives of CWSNs through individualised learning plans and therapeutic intervention.



	2003	2007	2011	2015	2018
Students	20	61	322	764	951
Staff	8	15	60	115	128
Donor Contribution	2.3	9.6	93.2	265.4	390.5
Fund Utilisation	75%	72%	98%	98%	98%



In Puducherry, attitudes towards disability is related to how parents and stakeholders perceive “karma” . Disability is perceived both as punishment for misdeeds in the past lives or the wrongdoings of their parents (a kind of “divine justice”), and socially it is attributed to the mother, leading to both the mother and child being perceived as inauspicious and shunned. Social fabric is such that the parents of children with special needs tend to feel the guilt and sometimes take on the blame for the impairment. Families, communities and sometimes even the medical professionals add to this guilt with their attitude, calling the child a 'vegetable', 'useless', or 'a burden, isolating the child, and often the family.

~From the executive desk

Way Forward

- A Model Rehab center for PWDs: Cradle to geriatric care including a short stay residential facility towards respite of the primary caregiver.
- Learning and Research Center for special needs

I shall create an eco system for your NGO to help expand the support system for them ~ Hon'ble. Dr. Kiran Bedi, Lieutenant Governor, Puducherry

I visited then for the first time in 2010 in a small building and today I am amazed to see the growth and reach that Satya has had. Amazed at the staffs dedication to the cause. ~ Rodney Maiden, University of IOWA, USA

Working with the Satya team has been an absolute delight. We are very proud to be associated with them and nominate the Satya Early intervention Center as the best center following the University of EUGEN early childhood care program outside the United States. ~ Dr. Judith Newman, Early Childhood Cares, College of Education, University of Oregon, USA



Before I brought my grand-child to Satya Special School, he couldn't move and sat at home alone all day; he had gained a lot of weight. Now he plays and interacts with other children and has access to the therapies and exercises he needs to progress and improve his motor skills ~Primary Care giver



I am grateful to Satya for all the opportunities and great encouragement I have got. Today I have travelled internationally. I would like to thank my teachers and others at Satya: Student



I have worked in a number of organisations, but the freedom, support and encouragement we get, especially from the parent, not just the management and colleague, help us raise the bar. ~ Staff



Satya Special School

Including the excluded...



**We will not change you for the world,
*but change the world for you***

Satya Special School, Pondicherry - 605008, India
+91-934 544 4449 | admin@satyaspecialschool.org
www.satyaspecialschool.org

- 
1. Satya Vocational Training Centre
 2. Satya Special School Early Intervention
 3. Autism Centre
 4. Satya Centre for Unique Learners
 5. Satya Village Rehabilitation Centre
 6. High Risk New Born Clinic
 7. Satya Village Rehabilitation Centre
 8. AICE
 9. Satya Village Rehabilitation Centre